

Ultra-Low Resistance Surface Mount Shunts

Ultra-low resistance surface mount current-sense resistors seem like the ideal package. The physical design, a strap of metal, seems ideal, offering the lowest inductance possible. Too often these resistors need some kind of resistor capacitor filter to limit the switching noise spikes. The problem is that the time constant for the shunt is the package inductance divided by the circuit resistance. Consequently, the lower the shunt resistance, the longer the decay times.

Most ultra-low resistance surface mount components model like a piece of wire. The ideal circuit model is a resistor. Many engineers deploy a four terminal Kelvin sensing method to reduce errors in the ground plane. This does nothing for errors in the sense resistor itself. A 1-watt, 0.005Ω surface mount resistor can have as much as 5nH of package inductance. When relying on the resistive element in a current measuring application, the circuit will have a limited frequency that can be defined as the point that the inductive reactance equals the shunt resistance, or

$$R_s = X_L$$

Where

$$X_L = 2 \cdot \pi \cdot F \cdot L.$$

In the case shown in Figure 1, the upper usable frequency limit is 160kHz! The time constant for the RL network is L/R or 1uS. For lower resistance values in the same package the problem only gets worse.

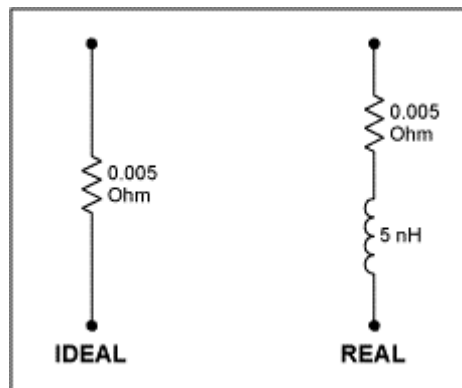


Figure 1.

This problem can be corrected with the RC circuit as shown in Figure 2. For a current-sense application we desire $I(j\omega) \cdot R_s = V_2$. The circuit in Figure 2 can be made to give this result by making the pole in the R1, C1 network cancel the zero in the shunt resistor.

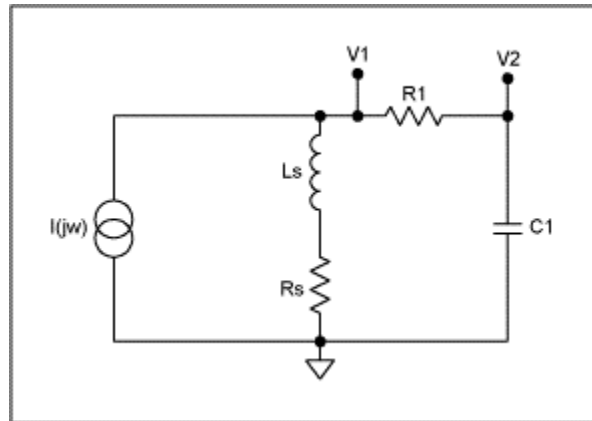


Figure 2.

Since

$$I(jw) \cdot (R_s + X_L) = V1$$

and

$$V1 \cdot \frac{X_C}{(R1 + X_C)} = V2$$

it follows that by substituting V1 in the second equation we have

$$I(jw) \cdot (R_s + X_L) \cdot \frac{X_C}{(R1 + X_C)} = V2.$$

Since we desire

$$I(jw) \cdot R_s = V2$$

we can modify the above expression as

$$I(jw) \cdot R_s \cdot \frac{(R_s + X_L)}{R_s} \cdot \frac{X_C / X_C}{(R1 + X_C) / X_C} = V2.$$

By simplifying we find that

$$I(jw) \cdot R_s \cdot \left(1 + \frac{X_L}{R_s}\right) \cdot \frac{1}{\left(1 + \frac{R1}{X_C}\right)} = V2$$

and by canceling the two radicals we have the desired result. From here we make

$$\left(1 + \frac{X_L}{R_s}\right) = \left(1 + \frac{R1}{X_C}\right)$$

where

$$X_L = 2 \cdot \Pi \cdot F \cdot L_s,$$

$$R_s = 0.005,$$

$$X_C = \frac{1}{2 \cdot \Pi \cdot F \cdot C1}$$

and choose

$$R1 = 100.$$

With simplification we find that

$$\frac{X_L}{R_S} = \frac{R1}{X_C}$$

or

$$\frac{2 \cdot \pi \cdot F \cdot 5nH}{.005} = \frac{100}{2 \cdot \pi \cdot F \cdot C1}$$

which simplifies to

$$C1 = \frac{5nH}{0.005 \cdot 100}$$

so

$$C1 = 0.01\mu F.$$

This model assumes the shunt is driven from a current source (high impedance) such as an inductor. It must be noted that the network in Figure 2 does not provide high-frequency filtering, because the response is flat. A second pole must be added for high-frequency rolloff. Driving the shunt with low impedance, such as a MOSFET source, introduces a pole at V1. This pole occurs when

$$R_{gen} = 2 \cdot \pi \cdot F \cdot L_S$$

or

$$F = \frac{R_{gen}}{2 \cdot \pi \cdot L_S}$$

If desired, this pole can be cancelled by inserting a zero with R2. If further accuracy is required you might try using potentiometers for R1 and R2 with your best guess for C1.

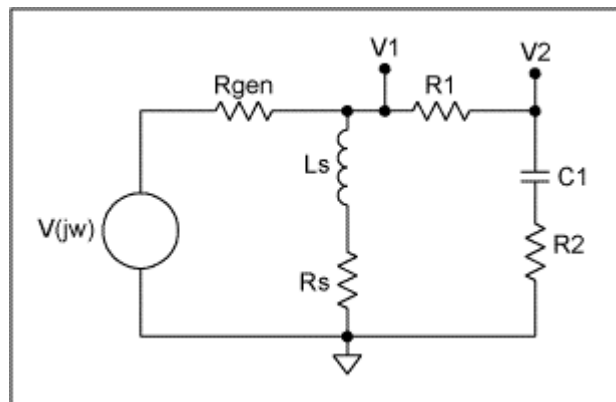


Figure 3.

Measuring these ultra-low resistance components can tax the most expensive inductance bridges and network analyzers to the limit of their capacity. Using high-frequency sweeps and maximum stimulus levels can help to bring these measurements up out of the noise floor. But circuit layouts, such as ground planes, can change the measured results.

In conclusion, it seems that the ideal current-sense resistor does not yet exist. As power-supply output currents continue to rise, these shunt resistors will probably be entering the sub-milliohm level very soon. Along with increased operating frequency, caution for these second and third order effects is good advice.

December 200